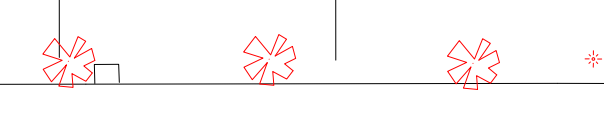


- 4-Bar
- PC
- Profile 1Kw
- 2Kw
- MAC600NT
- MAC550
- Barco R10 - Lens 1,2-1,6
- 650-P
- UPM-1P
- QSC-KLA12
- UPA-2P
- SMS
- ACL

INFOS:
 DMX A = MAC600
 SOCA E = SPARE
 DMX B = SPARE

INFOS:
 DMX A = MAC600
 SOCA L = SPARE
 DMX B = SPARE



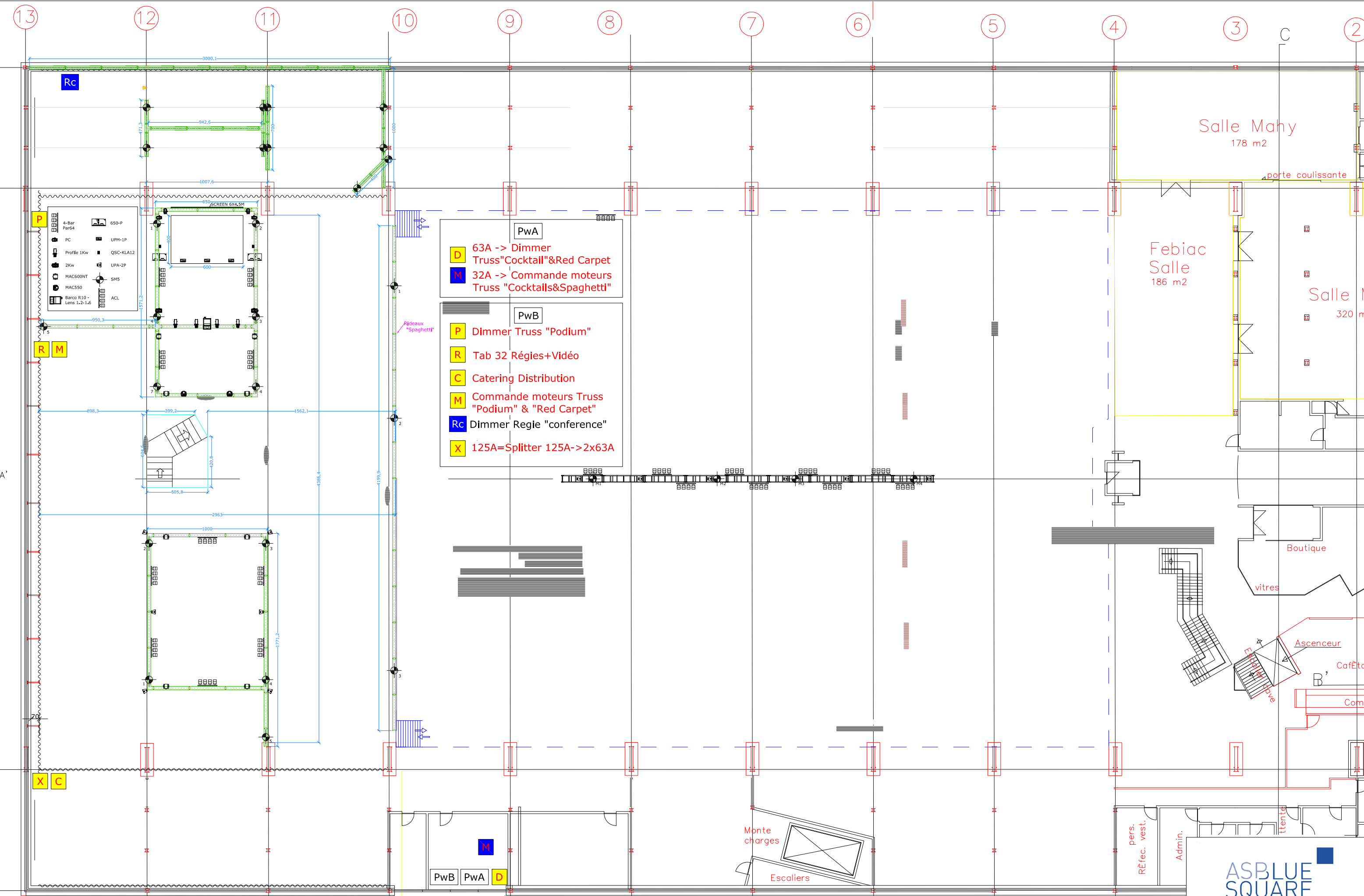
Client/Client:	Salon/Exhibition:	Localisation/Place:	Echelle/Scale:	Date/Date:	Note/Note:
XXX	XXX	Autoworld		xxx	MEZZANINE

117, Boulevard de l'Europe
 1301 Bierges
 Belgique

Tel.: +32(0)10 43 01 00
 Fax: +32(0)10 43 01 01
 Web: www.asbluesquares.com

fichier/file:
 V1



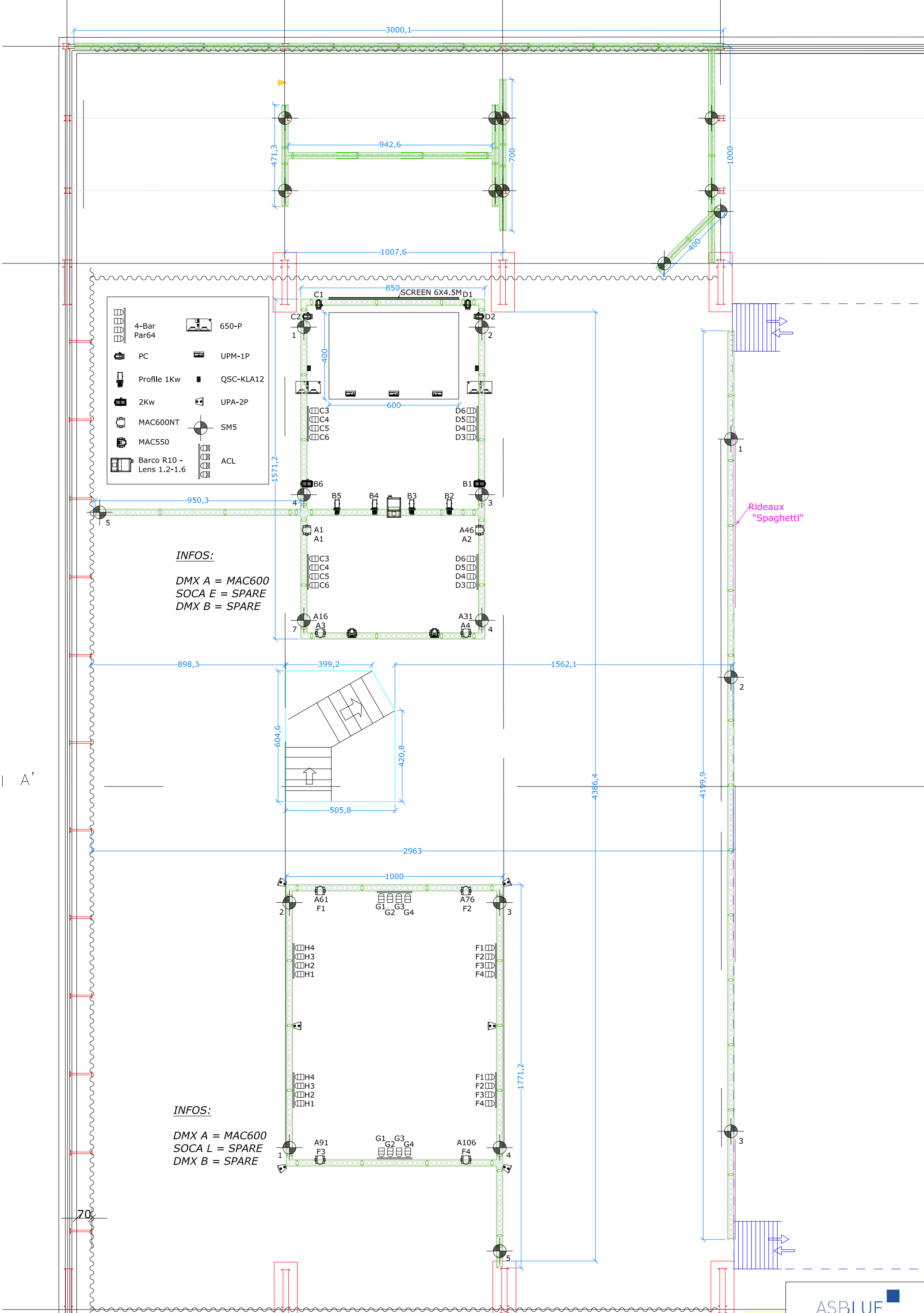


- PwA**
- D** 63A -> Dimmer Truss "Cocktail" & Red Carpet
 - M** 32A -> Commande moteurs Truss "Cocktails & Spaghetti"
- PwB**
- P** Dimmer Truss "Podium"
 - R** Tab 32 Régies + Vidéo
 - C** Catering Distribution
 - M** Commande moteurs Truss "Podium" & "Red Carpet"
 - Rc** Dimmer Regle "conference"
 - X** 125A = Splitter 125A -> 2x63A

- 4-Bar Port64
- PC
- Profilé 1Kw
- 2Kw
- MAC600NT
- MAC550
- Barco R10 - Lens 1,2-1,6
- 650-P
- UPM-1P
- QSC-KLA12
- UPA-2P
- SMS
- ACL

Client/Client:	Salon/Exhibition:	Localisation/Place:	Echelle/Scale:	Date/Date:	Note/Note:	117, Boulevard de l'Europe 1301 Bierges Belgique Tel.: +32(0)10 43 01 00 Fax: +32(0)10 43 01 01 Web: www.asbluesquares.com	fichier/file: V1
XXX	XXX	Autoworld		xxx	MEZZANINE		





INFOS:
 DMX A = MAC600
 SOCA E = SPARE
 DMX B = SPARE

INFOS:
 DMX A = MAC600
 SOCA L = SPARE
 DMX B = SPARE

Rideaux "Spaghetti"